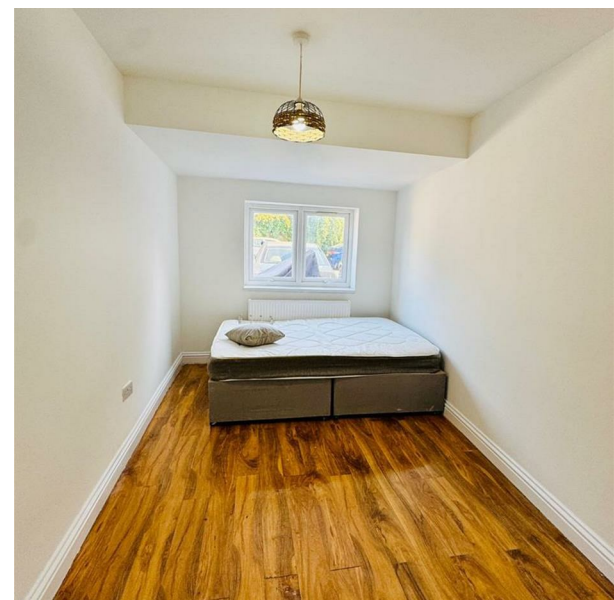


30 Stow Crescent, London, Greater London, E17 5EG
£2,000 Per Month

COMPLETION
SALES & LETTINGS



30 Stow Crescent, London, Greater London, E17 5EG

£2,000 Per Month

Council Tax Band: B

Welcome to this charming two-bedroom ground floor flat located on Stow Crescent in the vibrant area of Walthamstow, E17. Available for rent at £2000 per calendar month, this modern property offers a comfortable and stylish living space, perfect for individuals or small families.

Upon entering, you will find a well-proportioned reception room that serves as an inviting space for relaxation and entertainment. The flat boasts two spacious bedrooms, providing ample room for rest and personalisation. The contemporary bathroom is designed with modern fixtures, ensuring convenience and comfort.

The ground floor location not only offers easy access but also enhances the sense of community in this lively neighbourhood. Walthamstow is known for its rich culture, diverse amenities, and excellent transport links, making it an ideal choice for those who appreciate both urban living and a welcoming atmosphere.

This property is perfect for anyone seeking a modern flat in a desirable location. With its appealing features and proximity to local shops, parks, and transport options, this flat is a wonderful opportunity for those looking to make Walthamstow their home. Don't miss the chance to view this delightful property.







337 Forest Road
 London
 E17 5JR
 02085277007
enquiries@completion.co.uk
completion.co.uk

